



# Electrolux

**ELECTROLUX HOME PRODUCTS PTY LTD**

ABN 51 004 762 341

**Technical Publication N° RH103**

**Issue: 2**

**Date: 3/15**

***WESTINGHOUSE***

***BOX RANGEHOOD***

***MODEL:***

**WRC313S**

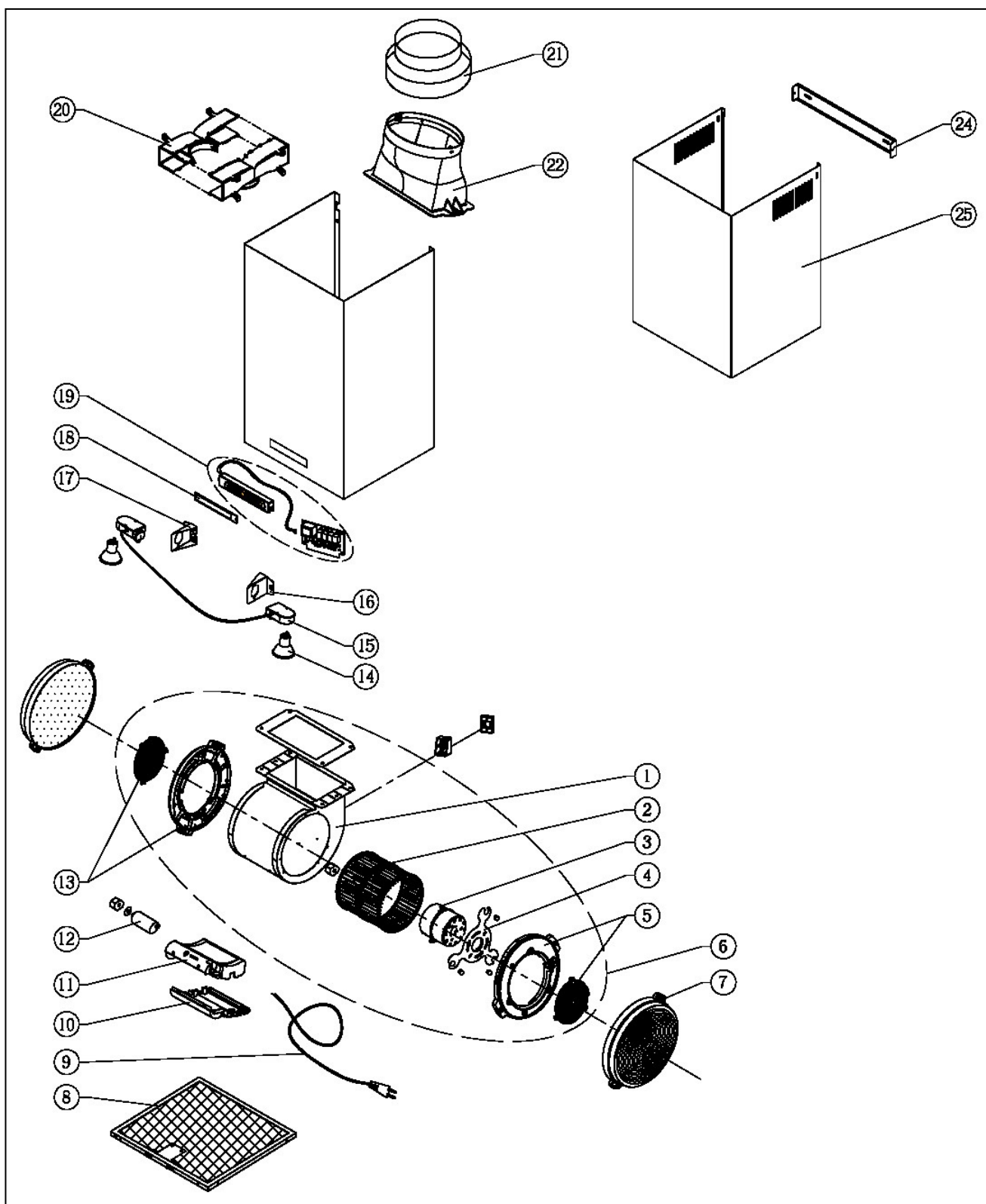
**PNC 942001182**

<b>First Built Dates:</b>	
<b>WRC313S</b>	<b>6/13</b>

<b>CONTENTS</b>	<b>PAGE N°</b>
FIRST BUILT DATES	2
CONTENTS	3
HOOD ASSEMBLY	4 - 5
CIRCUIT DIAGRAM	6

**NOTE: In Parts Listings**

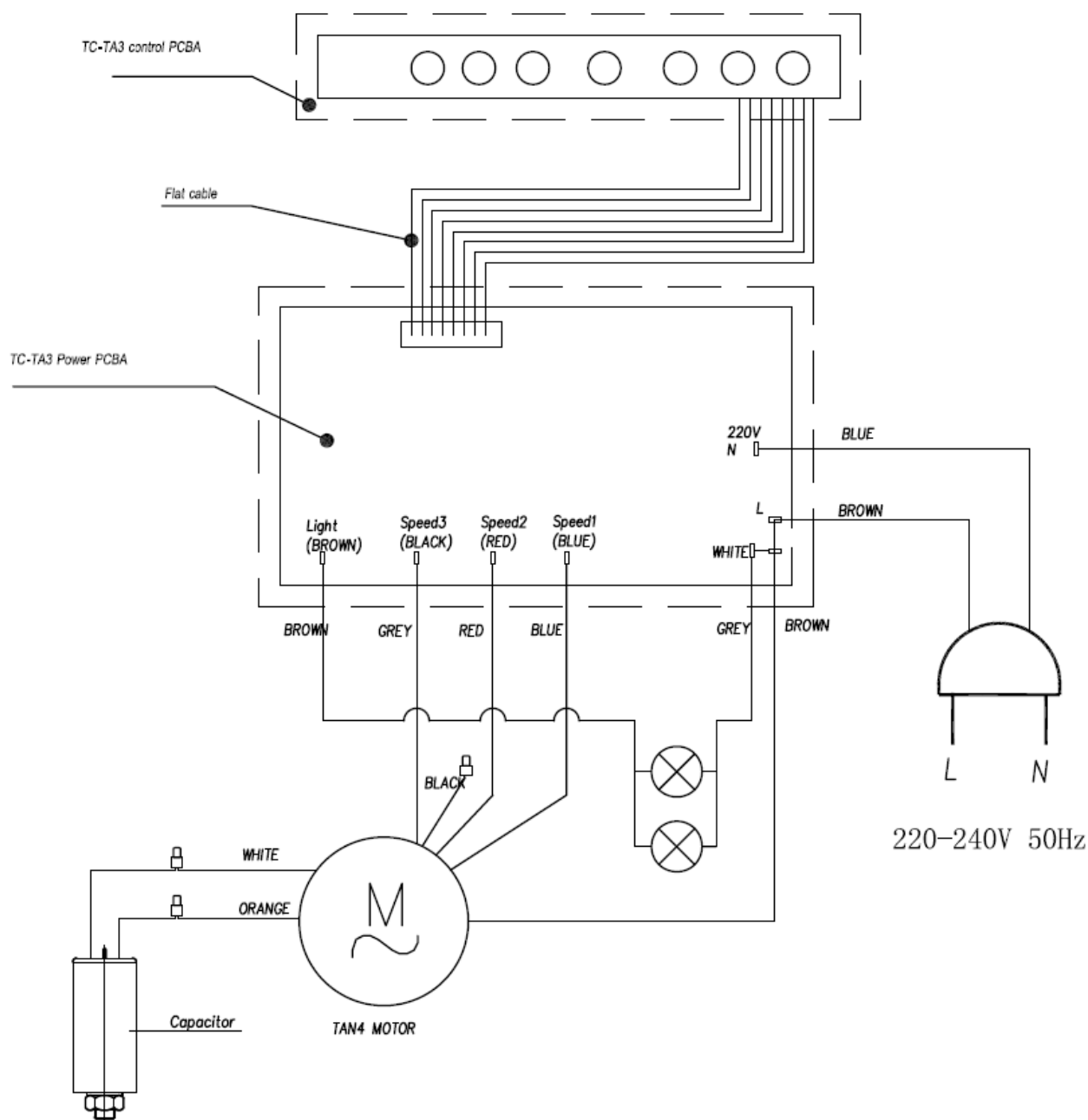
**N.I. = Not Illustrated**  
**N.P.A. = No Part Available**  
**N.P.N. = Not Used on this Model**



ITEM	PART N°	DESCRIPTION	QTY
1	<b>N.P.A.</b>	MOTOR GROUP CASING-HOOD-K (PT OF ITEM 6)	1
2	<b>E607075</b>	TURBINE-HOOD-K (PT OF ITEM 6)	1
3	<b>E649060</b>	TAN MOTOR 220-240V 50HZ 330W (PT OF ITEM 6)	1
4	<b>E629040</b>	MOTOR MOUNTING BRACKET-TA MOTOR (PT OF ITEM 6)	1
5	<b>E607165</b>	BETA INLET RING WITH GRILLE (RIGHT) (PT OF ITEM 6)	1
6	<b>E260050</b>	TAN 220-240V/330W MOTOR GROUP (INC ITEMS 13, 5, 4, 3, 2 & 1)	1
7	<b>AR610CF</b>	FILTER CHARCOAL	2
8	<b>E653075</b>	METAL FILTER WITH NEUTRAL CLIP-HOOD-TUBE HOOD	1
9	<b>E601025</b>	POWER CORD SAA (AUS)-HOOD-S FOR EHP	1
10	<b>E639030</b>	CONNECTION BOX COVER (SPLIT VERSION) (INC ITEM 9)	1
11		CONNECTION BOX (SPLIT VERSIONPT OF ITEM 9)	1
12	<b>E621025</b>	CAPACITOR 6.5µF 450V	1
13	<b>E607170</b>	BETA INLET RING WITH GRILLE (LEFT) (PT OF ITEM 6)	1
14	<b>69400830</b>	LED LAMP-LORITRONIC TLT-GU10-5W	2
15	<b>E251035</b>	LAMPHOLDER ASSEMBLY 2 GU10 LAMP-HOOD-MIRAGE 900	1
16	<b>E629240</b>	LAMP HOLDER RIGHT BRAK CET	1
17	<b>E629235</b>	LAMP HOLDER LEFT BRAK CET	1
18	<b>60704290</b>	CONTROL PANEL FOR TC SWITCH WITH ELUX SILKSCREEN- HOOD-CYLINDAR TC	1
19	<b>63900730</b>	SWITCH GROUP WITH NEW CONTROL BOX- HOOD(RED&WHITE LED)-HOOD-CYLINDAR TC	1
20	<b>AR610RK</b>	VENT RECIRCULATING KIT	1
21	<b>E607210</b>	Ø150 TO Ø120 OULET ADAPTER	1
22	<b>E607130</b>	Ø150 IMPROVED OUTLET BASE	1
24	<b>E629245</b>	TUBE BRACKET-HOOD-TUBE HOOD	1
25	<b>E629250</b>	UPPER TUBET-HOOD-TUBE HOOD	1
N.I.	<b>AR610FS</b>	COVER FLUE EXTENSION ST/ST 1200MM	x

MODEL: WRC313S  
PNC: 942001182

## CIRCUIT DIAGRAM



### WARNING

IT IS ILLEGAL FOR PERSONS OTHER THAN LICENSED ELECTRICAL MECHANICS OR PERSONS AUTHORISED BY LEGISLATION TO WORK ON THE FIXED WIRING OF ANY ELECTRICAL INSTALLATION. PENALTIES FOR CONVICTION ARE SEVERE.

### IMPORTANT SAFETY NOTICE

This diagram has been prepared for use by electrically qualified service technicians. Electrolux cannot be held responsible for the interpretation of its service publications nor for any injury or damage that may occur in connection with their use.